

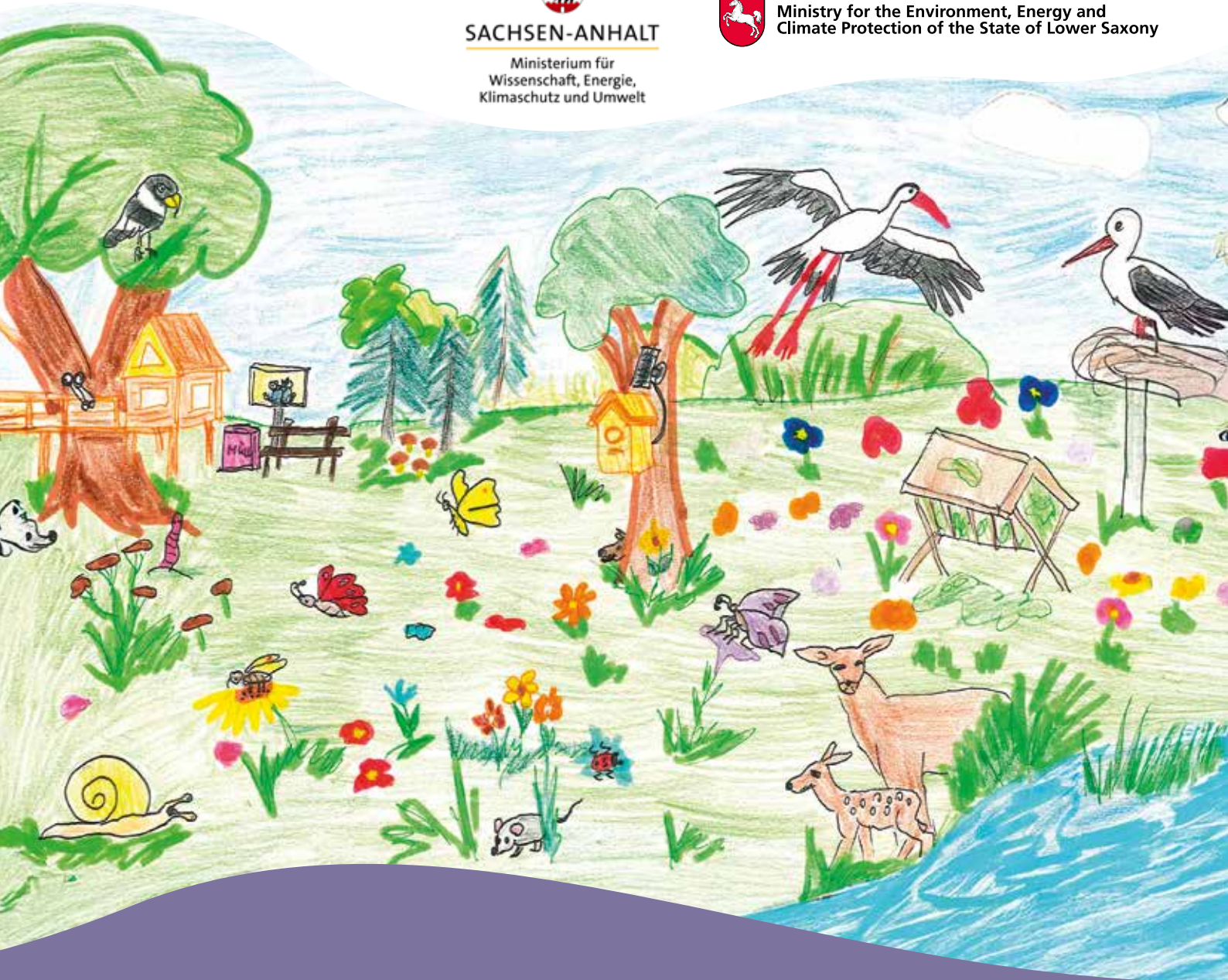


SACHSEN-ANHALT

Ministerium für
Wissenschaft, Energie,
Klimaschutz und Umwelt



Ministry for the Environment, Energy and
Climate Protection of the State of Lower Saxony



Framework for the UNESCO Biosphere Reserve Drömling

Summary



Biosphärenreservat
Drömling





Content

Framework for the UNESCO Biosphere Reserve Drömling	01
The UNESCO Biosphere Reserve Drömling at a glance	02
Strategy: Vision & development objectives	04
Action field: The cultural landscape & nature protection	06
Action field: Education & public engagement	08
Action field: Tourism & regional development	11
Action field: Sustainable living & economic activity	14
Action field: Research & monitoring	15
Outlook	16

Abbreviations

ESD	Education for Sustainable Development	LHW	State Agency for Flood Protection and Water Management
BRV	The UNESCO Biosphere Reserve Drömling Authority	NLWKN	Lower Saxony State Agency for Water Management, Coastal and Nature Protection
DEHOGA	German Hotel and Restaurant Association	VW-AG	Volkswagen AG
IG	Interest Group	ZVD	Drömling Natural and Cultural Landscape Association
IHK	Chamber of Industry and Commerce		
LAG	Local Action Group		
LBEG	State Office for Mining, Energy and Geology		

Suggested citation

The UNESCO Biosphere Reserve Drömling Authority (ed.) 2025: Summary of the Framework for the UNESCO Biosphere Reserve Drömling. Oebisfelde.

Photo credits

Lotta Hoffmann, Primary school 'An der Aller', Oebisfelde: cover page; Marlon Vorsprach, Primary school Mieste: p. 17; The UNESCO Biosphere Reserve Drömling Authority: contents page; pages 1, 6, 7, 8 top, 9, 10, 11 top, 12 top, 13, 14 top left, 15, 16 District of Gifhorn / Cognitio: page 8 top; Patschurek 2025, AI-generated: page 11 bottom; Meyer (from the Development Concept for the Drömling Biosphere Reserve, student project 2025): page 12 bottom; BTE: page 14 top right

Framework for the UNESCO Biosphere Reserve Drömling

This framework serves as a strategic guide for the development of the UNESCO Biosphere Reserve Drömling.

'The Drömling is a unique and special landscape that truly deserves this recognition – and the new opportunities that come with it.'

Quote from the 2024/2025 online survey

It was commissioned by the Reserve's administrative authority and prepared by BTE Tourismus- und Regionalberatung (Tourism and Regional Consultancy) between May 2024 and December 2025.

Key components of the framework include:

- an analysis of the current situation, including an assessment of strengths and weaknesses
- a mission statement for the UNESCO Biosphere Reserve and development goals across five action fields
- 18 flagship projects, along with further projects and recommended actions

The full version of the framework can be downloaded at: <https://www.biosphaerenreservat-droemling.de>

Many local stakeholders and residents of the Drömling have contributed to the framework – through the future workshop, a range of project workshops, the administrative authority's own workshop, the advisory board, an online survey and a school art competition.

Our heartfelt thanks to everyone for their commitment and valuable input!



The Drömling UNESCO Biosphere Reserve at a glance

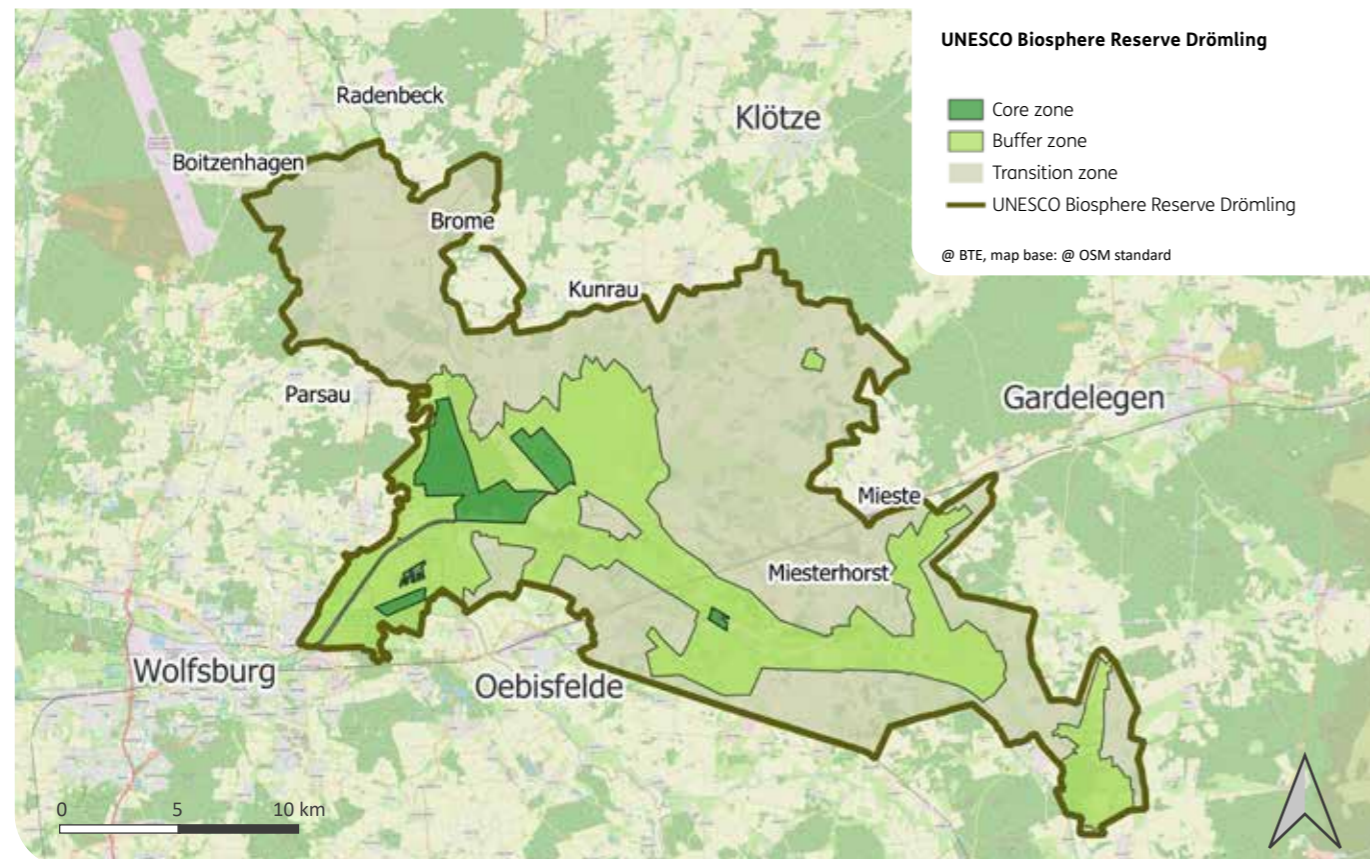
The UNESCO Biosphere Reserve Drömling is part of a global network currently comprising 784 biosphere reserves across 142 countries. Including Drömling, Germany is home to 17 such biosphere reserves. These are model regions for sustainable development.

It took over 30 years from the initial idea of establishing a biosphere reserve in the Drömling to its official recognition by the UNESCO. In 2023, the area was designated a cross-border UNESCO Biosphere Reserve. This brought together the protected areas of Drömling which cross federal state lines and led to the development of a joint conservation strategy for the region.

Drömling is a unique lowland landscape in northern Germany, located along the federal state border of

Saxony-Anhalt and Lower Saxony. Running through the heart of the area is the ‘Green Belt’ – a lasting symbol of the former inner-German border.

Over the past 250 years, Drömling has evolved into a cultivated landscape through the creation of a network of more than 2,200 kilometres of ditches, canals and weirs. It is widely known as the ‘land of a thousand ditches’ and is home to a wide range of rare and endangered animal and plant species.



Key facts – UNESCO Biosphere Reserve Drömling



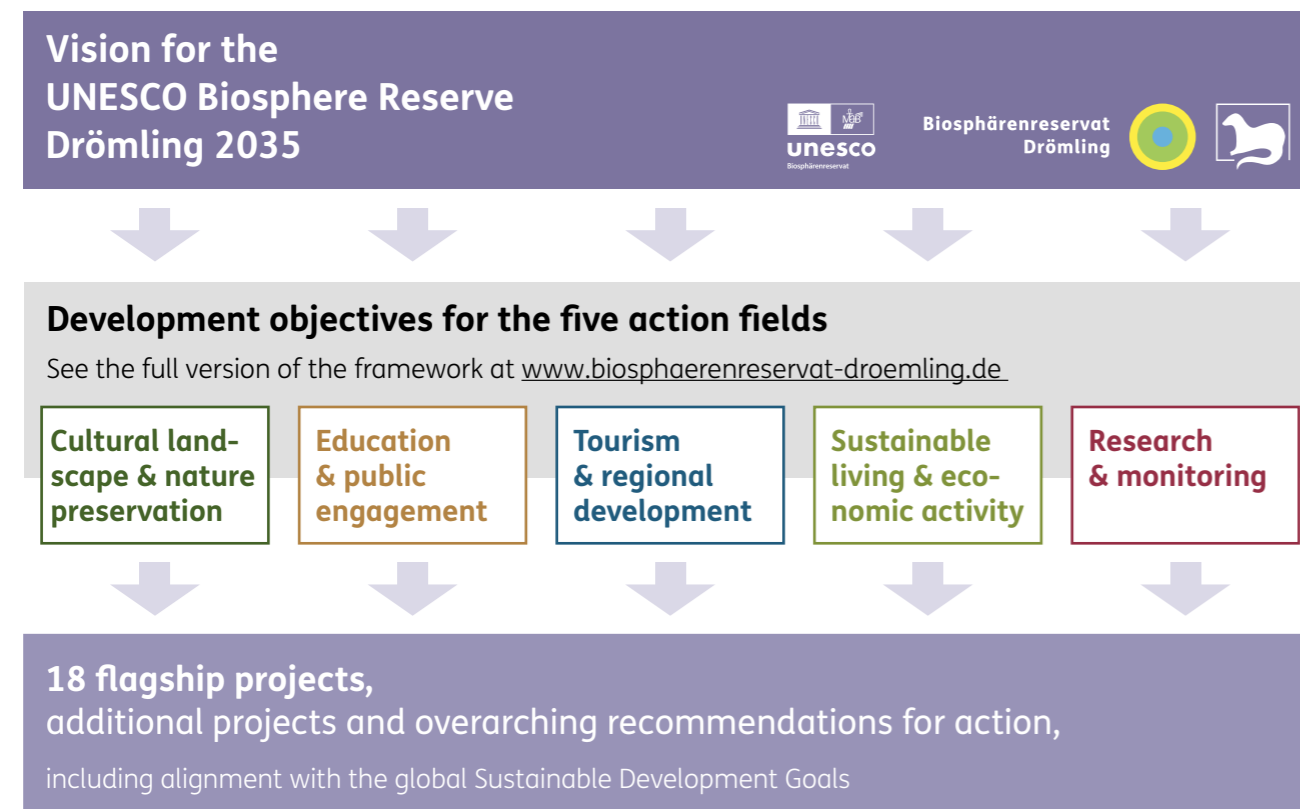
Location	<ul style="list-style-type: none"> Located along the federal state border of Lower Saxony and Saxony-Anhalt Lowland area between the rivers Aller and Ohre, bordered by the towns of Wolfsburg (Lower Saxony), Oebisfelde, the Hanseatic town of Gardelegen and Klötze (Saxony-Anhalt); the former inner-German border (now the Green Belt) and the Mittelland Canal run through the area Counties and towns within the biosphere reserve: Altmarkkreis Salzwedel, Börde district, Gifhorn district, Helmstedt district, City of Wolfsburg
Area	<ul style="list-style-type: none"> 45,220 hectares total in Saxony-Anhalt: 34,070 ha (approx. 75%) in Lower Saxony: 11,150 ha (approx. 25%)
Management and administration	<ul style="list-style-type: none"> Jointly managed by the states of Saxony-Anhalt and Lower Saxony (administrative agreement of 12 May 2022) UNESCO Biosphere Reserve Drömling Authority based in Oebisfelde
History	<ul style="list-style-type: none"> 1990: The Saxony-Anhalt part of Drömling designated as a nature park 2019: Designated as a biosphere reserve in Saxony-Anhalt 2023: Recognised by the UNESCO, with the official cross-border designation as a UNESCO Biosphere Reserve announced in 2024
Zoning	<ul style="list-style-type: none"> Core zone: 3.6% (1,650 ha) Buffer zone: 31.3% (14,140 ha) Transition zone: 65.1% (29,430 ha)
Protected areas within the reserve	<ul style="list-style-type: none"> 11 nature reserves, 5 landscape conservation areas, 7 FFH (Fauna-Flora-Habitat) sites, 3 special protected areas (SPA) National Natural Monument: Saxony-Anhalt Green Belt – From Death Strip to Lifeline
Unique features	<ul style="list-style-type: none"> Known as the ‘land of a thousand ditches’ with 2,200 km of waterways and 250 weirs A network of human-made waterways and ditches, now developed in harmony with nature Rimpau peatland dam cultures as a traditional form of land management in Drömling Largest fen area in Saxony-Anhalt and one of the most significant in the Middle Pleistocene region For many years, the character of Drömling was defined by the division of Germany and the inner-German border.
Key strengths	<ul style="list-style-type: none"> A unique natural and cultural landscape with valuable open habitats, woodland biotopes and aquatic ecosystems Traditional land-use systems (Rimpau peatland dam cultures) Habitat and refuge for numerous rare and endangered animal and plant species Plays a crucial role in habitat connectivity and biodiversity Green belt designated as a National Natural Monument Strong commitment to education for sustainable development, with a wide range of opportunities – from Junior Ranger programmes and guided excursions to educational holidays Great potential for day tourism thanks to proximity to densely populated areas Partner network of around 70 organisations and strong regional branding Sites of cultural and historical importance, showcasing traditional crafts and cultural practices Longstanding environmental monitoring and solid scientific research data

Strategy: Vision & development objectives

The development strategy sets out the framework and direction for how the UNESCO Biosphere Reserve is to evolve over the next ten years. It comprises an overarching vision and objectives for the five action fields. The vision and development objectives led to the definition of 18 flagship projects, four additional projects and overarching recommendations for action.

The action fields are not to be viewed in isolation, but are closely interlinked, with numerous overlaps and interactions between them. The same applies to the

projects, which, although primarily associated with a single action field, often support several fields simultaneously through their impact.



Vision for the UNESCO Biosphere Reserve Drömling 2035

Biosphere reserves are **model regions** which explore how people and nature can live alongside each other in harmony. They protect cultural landscapes from destructive interventions and conserve and enhance valuable habitats for the benefit of both people and nature. They ensure a balanced relationship between human use and natural cycles, thereby contributing to regional value creation. Biosphere reserves also generate exemplary insights for research into the interactions between natural and social processes.

The unique cultural landscape of the **UNESCO Biosphere Reserve Drömling** – its human-made network of waterways and ditches has since evolved into a near-natural state – provides a valuable habitat for rare and threatened animal and plant species. It is also an important testament to landscape development and human history. Drömling is known as the ‘land of a thousand ditches’. Of particular note are the Rimpau peatland dam cultures – a historical form of land use in the fens and a characteristic feature unique to the region.

The UNESCO Biosphere Reserve is of great importance for habitat connectivity along the Ohre and Aller rivers and acts as a link between the catchment areas of the Elbe and Weser. The former inner-German border, the ‘**Green Belt**’, plays a special role and is now protected as a National Natural Monument. It runs through Drömling as a connecting element and forms part of the largest habitat connectivity system in Europe. Owing to its former border location and numerous monuments of German history, Drömling also holds significant value as a commemorative landscape.

The **aim of the UNESCO Biosphere Reserve Drömling** is to conserve, further develop and safeguard the area’s unique natural and cultural assets as a legacy for future generations. Drömling is viewed as a model region for sustainable living, economic activity and learning.

All activities are guided by four core principles:

- **Preserving cultural landscapes and biological diversity:** Protecting natural habitats and biodiversity in Drömling is a central priority. The cultural landscape is maintained through adapted land-use practices and a regionally characteristic water regime is promoted. This also contributes to climate protection and climate change adaptation.
- **Developing the region sustainably:** A liveable future is being shaped in partnership with the people of the region. Economically viable, landscape-conserving forms of land use, peatland protection, sustainable tourism, regional economic cycles and social participation are key priorities.
- **Education, research and participation:** Drömling is an important place of learning. Environmental education and education for sustainable development (ESD) are promoted, while spaces for participation and dialogue are created. The ongoing development of the UNESCO Biosphere Reserve is supported by scientific research.
- **Collaboration:** The development of Drömling as a vibrant model region in line with the UNESCO MAB philosophy (‘Man and the Biosphere in harmony’) takes place across state boundaries and in close cooperation with partners at the state level, local communities, local authorities, associations, land users and businesses.

This vision is to be implemented through five action fields within the UNESCO Biosphere Reserve:

1. Cultural landscape and nature protection
2. Education and public engagement
3. Tourism and regional development
4. Sustainable living and economic activity
5. Research and monitoring

The framework for the UNESCO Biosphere Reserve sets out specific objectives and projects to further develop these five fields of action in a targeted manner over the next ten years.



‘For me, the charm of the Drömling lies where it feels quiet and secluded, where nature is allowed to grow untamed and where it is not always possible to get through on foot.’

Quote from the 2024/2025 online survey

Action field: Cultural landscape & nature protection

The unique cultural landscape of the UNESCO Biosphere Reserve Drömling is characterised by the close interlinking of ditches and open-land habitats. Its distinctive feature is the Rimpau peatland dam culture. The habitats of the Drömling, with their rich biodiversity, have developed through human use and can only be preserved through long-term, habitat-appropriate management. This requires, above all, the development of sustainable forms of land use, as well as the improvement and safeguarding of the characteristic Drömling water regime.

Flagship project 1: Implementation of sustainable land use



In the long term, the valuable cultural landscape of the Drömling can only be preserved through sustainable land use and exemplary, practical solutions. Four sub-projects are intended to develop and assess new approaches:

- Preparation of a management strategy for shrubs and wetlands as an update of the maintenance & development / management plan
- Implementation of regional energy generation from grassland biomass and woody biomass
- Feasibility study for the establishment of composting facilities

with integrated energy use in the Drömling

- Promotion of extensive grazing systems and staggered mowing regimes

Stakeholders involved: BRV, ZVD, working group ‘Water Regime, Nature Protection, Agriculture and Forestry, Hunting’ Working Group, universities, farmers, Drömling Interest Group, maintenance associations, fishing associations, municipalities, environment ministries, private stakeholders

Timeframe: medium to long term (5-10 years)

Flagship project 2: Improving water management in the Drömling

The water management system plays a key role in achieving all conservation objectives in the UNESCO Biosphere Reserve. The aim of the project is to improve climate-adapted water and land management. The project comprises two components:

- Development of a cross-state water management strategy
- Subsequent implementation of measures to improve the water balance

Stakeholders involved: BRV, nature protection and water authorities,

LHW (Saxony-Anhalt), NLWKN and LBEG (Lower Saxony), maintenance associations, rural districts, municipalities, land users

Timeframe: medium to long term (5-10 years)



Flagship project 3: Rewetting of peatland areas

In three subprojects, lowland fen areas are to be rewetted. This is intended to prevent peatland loss and ensure effective water retention.

- Jeggau Moor subproject: Extension of the existing project area, identification of land requirements and land ownership, simulation using the required target water levels, implementation of rewetting measures, public engagement and environmental education
- Klüdener Pax-Wanneh subproject: Hydrological assessment, proposals for action, implementation of hydraulic engineering measures, public engagement, etc.
- Northern Drömling and Rätzlinger Drömling subproject: Technical implementation of water transfer from the Mittelland Canal

Stakeholders involved: BRV, nature protection and water authorities, maintenance associations with weir commissions, rural districts, municipalities, land users

Timeframe: medium to long term (5-10 years)





Action field: Education & public engagement

To achieve the aims of the UNESCO Biosphere Reserve Drömling, education and public engagement are key priorities. They help people gain a deeper understanding of the natural and cultural landscape, encourage sustainable thinking and behaviour, and strengthen the local communities' connection to their region. The Drömling Biosphere Reserve is recognised well beyond the region through its projects and initiatives in environmental education and education for sustainable development (ESD). The goal is to continue these programmes, improve coordination and networking, and further develop them to meet the needs of different target groups.

Flagship project 4: Establishing an education network and joint implementation of the education strategy



Educators in and around the Drömling region are keen to work more closely together within a regional network. Regular meetings are planned to facilitate dialogue, coordinate shared themes and activities, and further develop and promote regional educational opportunities. The new education strategy for the biosphere reserve will be implemented in collaboration with the Education for Sustainable Development (ESD) partners.

Stakeholders involved: BRV, schools, nurseries, after-school clubs and other education providers, certified nature

and landscape guides, educational institutions and partners such as adult education centres, extracurricular learning sites, associations, volunteers, volunteer rangers, junior rangers and parents, as well as district and municipal authorities

Timeframe:

- Initial network meeting, overview of ESD programmes and presentation of a education strategy: 2026
- Further networking meetings: once or twice per year
- Ongoing work between networking meetings

Flagship project 5: Development and redesign of decentralised information points

The network of decentralised information points in the UNESCO Biosphere Reserve Drömling is to be expanded. These information points will serve as local hubs for visitors and residents alike, providing insights into the reserve and its themes. Subprojects are at varying stages of readiness: New information centre in Rühren (new building; see design illustration on

the left), Natura 2000 Information Centre in Buchhorst (conversion of an old pumping station), Drömling Information Centre in Kämkerhorst (redesign of the exhibition), Kunrau Castle (development into an environmental education centre with a school for environmental learning, a nature discovery area and a redesigned exhibition)

Stakeholders involved: BRV, State of Saxony-Anhalt (Construction and Property Office), Gifhorn District, City of Klötze and other municipalities, partners of the biosphere reserve

Timeframe: predominantly medium term (5 years)

Flagship project 6: Continuing and expanding existing activities in the ESD area

The UNESCO Biosphere Reserve Drömling already offers a wide range of ESD opportunities for various target groups. To maintain and further expand these, both staffing and financial resources are essential, as well as suitable indoor and outdoor learning environments. The programme will be adapted and further developed to meet the needs of various target groups. Other key aims include incorporating current topics such as sustainability and climate protection, and strengthening collaboration with both existing and new partners.

Stakeholders involved: BRV; the Education Network of the UNESCO Biosphere Reserve Drömling (see flagship project 4); the Coordination and Service Office for ESD in Saxony-Anhalt; the North German Academy for Nature Protection; certified nature and landscape guides; rangers; project participants; volunteers; nurseries and schools in the biosphere reserve along with their staff, parents and children; educational institutions and providers; extracurricular learning centres; and additional partners such as the Volkswagen Group and the Chamber of Commerce and Industry (IHK)

Timeframe: ongoing



Flagship project 7: Expanding educational opportunities for schools and nurseries

Nurseries and schools are key partners in education for sustainable development. The UNESCO Biosphere Reserve Drömling aims to work more closely with them and support their educational efforts. The core goal of this flagship project is to establish biosphere nurseries and biosphere schools.

Stakeholders involved: BRV; nurseries and schools in the reserve along with their staff, parents and children; other educational institutions and providers; extracurricular learning centres; the Ministry of Science, Energy, Climate Protection and the Environment of Saxony-Anhalt; the Ministry of Education of Saxony-Anhalt; the Lower Saxony Ministry of Education

Timeframe:

- Short term (by 2027): Joint development of criteria, objectives and focal points for biosphere nurseries and biosphere schools
- Medium-term (5 years): Building partnerships with selected nurseries and schools; creating teaching resources and school project modules for educators; developing ESD education programmes for secondary schools; training for teachers and early years staff
- Long term (10 years): Expanding partnerships to additional nurseries and schools; establishing further opportunities for schools through extracurricular learning venues



90% consider environmental education and public outreach to be important topics for the future development of the Drömling.

Result from the online survey 2024/2025

Flagship project 8: Developing new and additional educational and visitor experiences

The range of educational offerings in the Drömling is to be expanded in collaboration with local institutions and providers. The pool of ideas gathered through the survey and workshops held in connection with developing this framework can serve as inspiration for new offerings that are distinctive to the region, modern and easy to book. Examples include: a grief trail in the Drömling; activities based on legends, myths and traditional stories; stamp stations throughout the area to collect stamps towards walking badges; 'Fit and Health through the Year' (a food trail with themes around nutrition and cooking); a nature discovery trail featuring bird nests and 'Look closely' stations; and activities for grandparents with grandchildren, among many others.

Stakeholders involved: BRV, implementation partners (such as environmental organisations, land users, tourism providers), education network, educational institutions

Timeframe:

- Educational projects to be selected and firmed up at the first ESD network meeting in 2026
- Initial ideas to be implemented from 2026; further ideas to follow in the medium to long term

Flagship project 9: Implementing the communications strategy



'Do good and talk about it' – biosphere reserves rely on strong communication and a strong public image to engage both visitors and local communities, and to maintain dialogue with a wide range of cooperation partners. The BRV aims to develop a new communications strategy by the end of 2026, with a focus on online platforms and social media. The measures outlined in the strategy will then be implemented.

Stakeholders involved: BRV, hosts, biosphere partners, the press, tourism organisations, etc.

Timeframe:

- Development of the strategy: 2026
- Phased implementation from 2027



Action field: Tourism & regional development

The existing tourism offer in the Drömling is primarily geared towards local residents and day visitors. The focus is on nature experiences and landscape-based outdoor recreation such as cycling, walking and horse riding. To enhance the region's appeal to visitors and strengthen the local economy, sustainable and regionally distinctive activities will be further developed. Visitor management and information provision will also be expanded. The UNESCO biosphere reserve's partner network and regional brands will be carried forward and extended.

Flagship project 10: Maintaining and developing tourism infrastructure and offerings

Tourism infrastructure in the Drömling is to be carried forward and further developed (such as continuing the horse riding working group and establishing a new working group on cycling and walking). The region's characteristic qualities and structures will be incorporated into the development of new offerings, with the aim of appealing to day visitors from nearby urban areas as well as younger target groups. From the many project ideas – such as creating a ditch discovery trail, cow-cuddling experiences, stargazing activities, or unique overnight stays – the BRV will select and implement viable proposals together with its partners.

Stakeholders involved: BRV, various partner organisations and service providers, agricultural enterprises, certified nature and landscape guides, landowners, Wolfsburg Planetarium, hospitality businesses in and around the Drömling, DEHOGA (German Hotel and Restaurant Association), hunting associations, conservation groups

Timeframe:

- Short term: Ideas to be analysed and selected
- From mid-2026: Selected ideas to be implemented in phases





Flagship project 11: Gateways to the Drömling

Visitors should be clearly aware that they are entering the UNESCO Drömling Biosphere Reserve. In future, ‘Gateways to the Drömling’ will welcome guests, provide information about the reserve, and serve as entry points for visitor orientation both into and within the area. Existing and planned information centres will be developed into main ‘portals’. In addition, further suitable locations along key access routes will be established as ‘Windows onto the Drömling’ – for example, the premises of partner organisations, tourist information points or designated biosphere nurseries and schools.

Stakeholders involved: BRV, districts, municipalities, operators of tourist information centres and partner organisations, nurseries and schools, artists, regional craftspeople and others

Timeframe: Initial phase to begin shortly; phased implementation; further development in the medium to long term

Flagship project 13: Expanding (digital) visitor information

Visitors to the Drömling, along with local residents and partners of the UNESCO biosphere reserve, should be able to find and access information and services quickly and easily. To achieve this, digital media will be further developed – including the biosphere reserve’s website, online communication, and the use of digital enhancements on-site (such as audio guides, QR codes, digital stamp systems).

Stakeholders involved: BRV, local authorities, service providers, technical implementation partners

Timeframe: Communications strategy to be developed by the end of 2026, followed by phased implementation



Flagship project 12: Experiencing border history



The Green Belt along the former inner-German border and the ‘land of a thousand ditches’ are unique features of the region and hold considerable potential for tourism that should be harnessed more effectively. Existing offerings related to the border and the history of the Drömling are to be further developed, expanded through new initiatives, consolidated and presented in a more engaging way.

Stakeholders involved: BRV, tourism organisations, stakeholders along the Green Belt (potentially within a working group), local action groups (LAGs),

memorial sites/museums, tourism stakeholders, local heritage and history societies, landowners, nature conservation authorities and associations, district and local councils, regional planning associations and spatial planning authorities

Timeframe:

- Short-term: initial coordination between partners and analysis of the present offerings
- Medium-term: implementation depending on funding arrangements and approvals

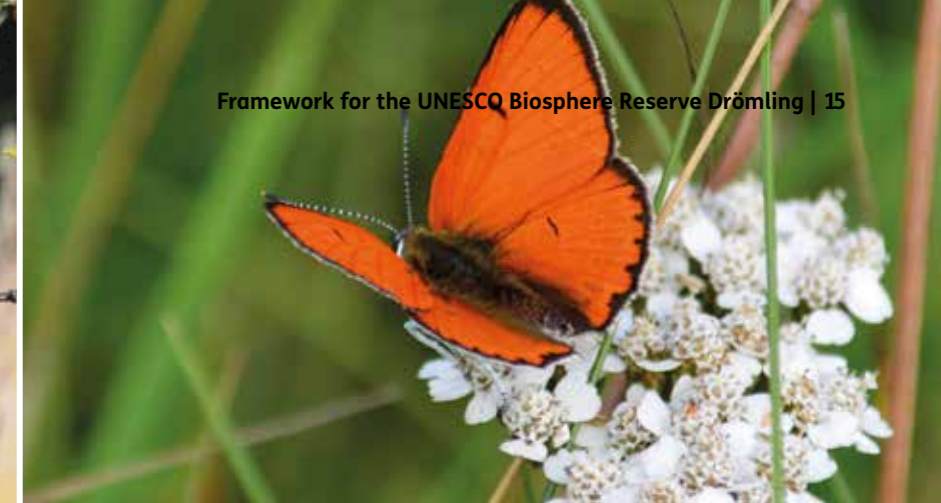
Flagship project 14: Further development of regional brands and partner organisations



The Drömling Biosphere Reserve has established an extensive network of partners from a range of sectors, all of whom operate according to the principles of sustainability and are recognised based on quality standards. Cooperation and knowledge-sharing within this partner network will be carried forward and expanded in future. Activities to support and promote regional products and services will also be embedded more firmly and further developed.

Stakeholders involved: BRV, partners within the network, regional producers, providers, organisations, associations and federations, and other stakeholders in the UNESCO Biosphere Reserve

Timeframe: Ongoing implementation



Action field: Sustainable living & economic activity

In the UNESCO Drömling Biosphere Reserve, sustainable lifestyles and economic practices are to be developed in collaboration with local communities, taking into account the needs of both people and nature. The flagship projects address key current conditions in the Drömling and aim to promote sustainable and spatially compatible energy production as well as to enhance the area's appeal as a place to live and do business.

Flagship project 15: Analysis of potential and development of criteria for renewable energy production

The aim is to promote sustainable energy generation in the Drömling, while taking into account the statutory conservation and development objectives of the UNESCO Biosphere Reserve. This flagship project includes:

- The development of scenarios for the expansion of renewable energy sources and the launch of pilot and research projects
- The creation of further concrete guidelines on photovoltaics, wind power, and heat generation from biomass
- The associated monitoring
- Intensified dialogue and communication on energy-related issues

Stakeholders involved:

BRV, local nature protection authorities, local authorities, authorities overseeing land-related issues, (regional) energy providers, investors, universities/higher education institutions, planning consultancies and research institutions, associations and interest groups

Timeframe: Medium term

Flagship project 16: Attractive rural living

Life in a rural region like the Drömling offers many advantages – peace and quiet, natural surroundings and a strong sense of community – but also presents challenges due to demographic change and population decline. To make rural life more appealing, initiatives will be introduced to attract young professionals, strengthen regional identity, support volunteering and community life, promote sustainable mobility, and much more.

Stakeholders involved: BRV, local and district authorities, local action groups (LAGs), associations, clubs, cooperation partners such as Volkswagen Group, partner businesses, companies, the Job Centre, chambers of trades and commerce, investment bank, universities, schools, local people, volunteers, sponsors, Förderverein Ökologische Freiwilligendienste e. V., and the central office for the German Federal Voluntary Service in the Environmental Sector

Timeframe: phased, long-term

Action field: Research & monitoring

Research and monitoring efforts focus on how the Drömling's historically unique land use and water management practices can be reconciled with current challenges such as peatland conservation, climate adaptation, and water balance. Interrelationships and interactions are to be continuously recorded, evaluated in terms of outcomes, and supported through innovative research projects that address practical issues and challenges.

Flagship project 17: Revision and expansion of the monitoring strategy

Monitoring within the biosphere reserve is to be expanded in scope and coverage to include the entire UNESCO Biosphere Reserve area and adapted to address new issues. While ecological monitoring focusing on species and habitat surveys remains central in the core and buffer zones, socio-economic research is to be established in the transition zone.

Stakeholders involved: BRV, planning consultancies, universities, higher education and research institutions, Nationale Naturlandschaften e. V., relevant specialist authorities (such as forestry and nature protection)

Timeframe: By the end of 2028 – updating of the maintenance and development plans in Saxony-Anhalt and review and expansion of the monitoring strategy for the Lower Saxony section of the reserve

Flagship project 18: Identifying and addressing new issues, expansion of monitoring and research as needed

Research will continue to focus on the interactions between land use and water management specific to the Drömling. In future, additional issues will be explored in collaboration with research partners, as needed – for example, through integrated pilot projects on the impacts of climate change, new forms of land use, or the socio-economic aspects of various land uses.

Stakeholders involved: BRV, universities/higher education institutions, research institutes, planning consultancies (where applicable), relevant specialist authorities, land surveying offices, agricultural enterprises, Nationale Naturlandschaften e. V.

Timeframe:

- Ongoing continuation and expansion of monitoring activities with partners
- Integrated research projects: starting in the short term and phased thereafter



Outlook

The new framework for the UNESCO Biosphere Reserve Drömling establishes a strategic roadmap for the next ten years. The task now is to implement the development strategy on a phased basis. This requires the engagement of suitable project partners, the allocation of responsibilities and the clarification of funding and grant opportunities.

As an initial step, starter projects will be identified that can be implemented in the near future. Many initiatives are designed as long-term projects or consist of several subprojects that are to be implemented gradually over the period from 2026 to 2036.

In delivering the flagship projects, the UNESCO Biosphere Reserve Drömling Authority will assume a range of different roles – acting as project lead or partner, driving force or coordinator.

An interim evaluation after five years is recommended in order to fine-tune the various activities in a targeted manner. This will make it possible to recruit new project leads, identify additional funding opportunities and adapt individual initiatives to changing conditions.

‘The successful implementation of the framework depends on the commitment and active support of regional partners.

Please get in touch with us!

Fred Braumann, Head of the UNESCO Biosphere Reserve Drömling



Publisher:

Authority of the
UNESCO Biosphere Reserve Drömling
Bahnhofstraße 32
D-39646 Oebisfelde
Tel. +49 (0)39002 850 0
www.biosphaerenreservat-droemling.de

Concept, content and design:

BTE Tourismus- und Regionalberatung
www.bte-tourismus.de

December 2025